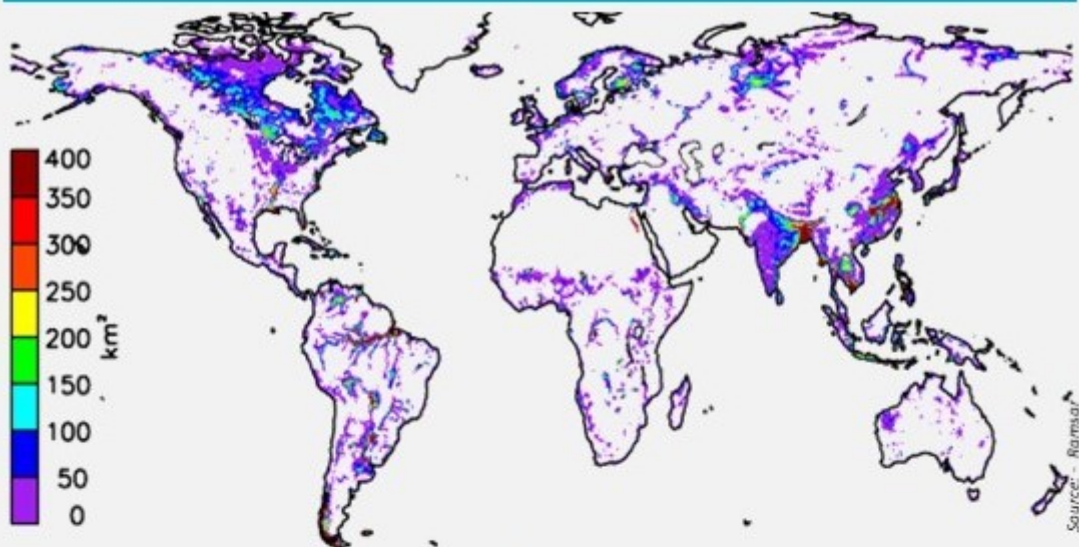


WHY WETLANDS NEED ATTENTION



Up to **19,500**

Animal and plant species directly depends on wetlands

Up to **87%**

of the global wetland resource has been lost since 1700



1/3 Endangered species rely directly, or indirectly, on wetlands for survival



50 Times more carbon capturing capacity than rain forests



Million gallons of floodwater can be logged in 1 acre of wetland

Up to **75%**

Commercially harvested fish are from wetlands. That number is **95%** when we add shellfish



With **42** million acres,

the Pantanal is the largest tropical wetland and one of the most pristine ecosystem in the world

Around 300 to 400 million people live close to wetlands and directly depends on it.

Wetlands filter, clean and store water - acting like kidneys for other ecosystems.

Without wetlands, cities have to spend more money to treat water, floods can have more devastating impacts on nearby communities, storm surges from hurricanes can penetrate farther inland, animals will be displaced or die out, and food supplies will disrupted, along with livelihoods.