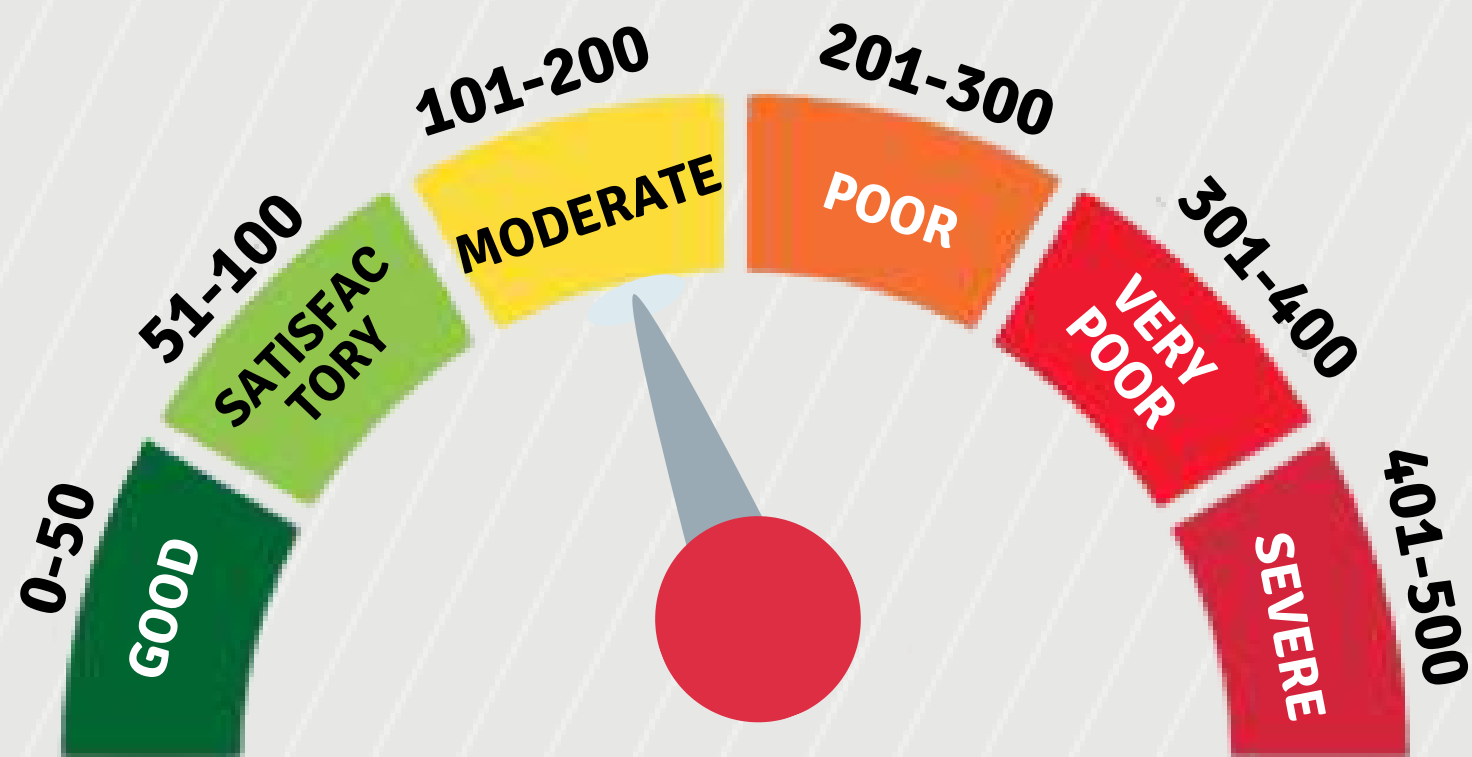


# Public Health Advisory Associated to Air Quality Index (AQI)



## BASICS



AQI is an index for Reporting Air Quality on Daily Basis.



Use SAMEER Mobile App to Monitor the Daily AQI of your Location.



AQI is Processed Using Data Collected from Ground-Level Monitoring Stations.

## RECIPIENT



PREGNANT WOMAN



SICK PERSONNEL



ELDERLIES



CHILDREN

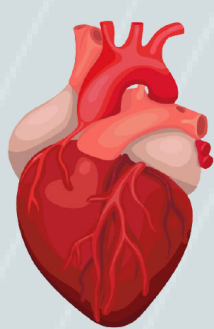


INFANTS



OUTDOOR WORKERS

## IMPACT



HEART



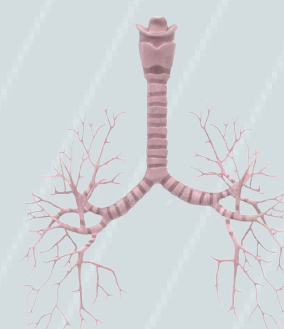
BRAIN



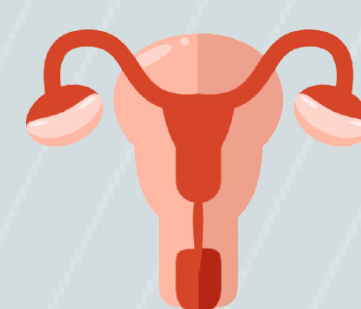
LIVER



LUNG



BRONCHUS



REPRODUCTIVE SYSTEM

## ADVISORY



0-50

A Great Day for Outdoor Activities



51-100

A Nice Day for Outdoor Activities



101-200

Sensitive Group shall Limit Prolonged Exertion (> 1hrs)



201-300

Sensitive Group shall Avoid and Others shall Limit Prolonged Exertion.



301-400

Sensitive Group shall Avoid and Others shall Limit Outdoor Exertion.



401-500

Everyone shall Avoid Outdoor Exertion.