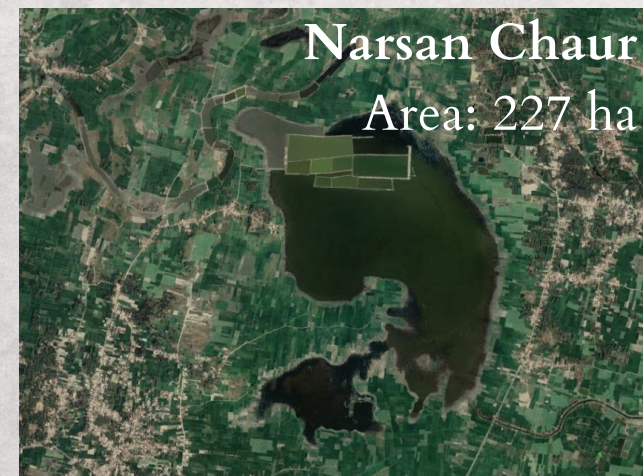
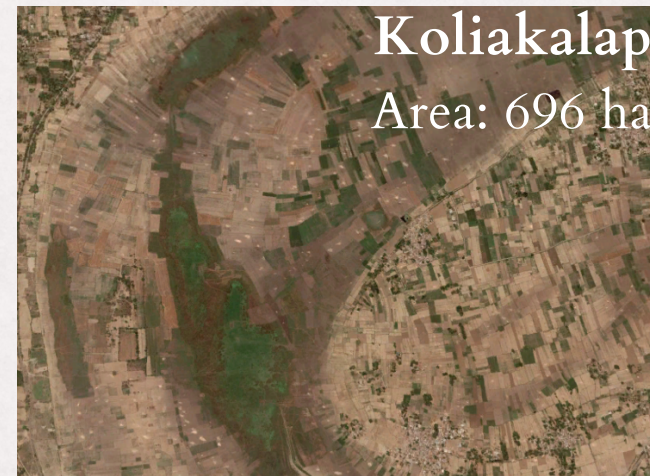


WETLANDS OF BIHAR

Calendar 2022



**Centre for Studies on Environment and Climate
Asian Development Research Institute**

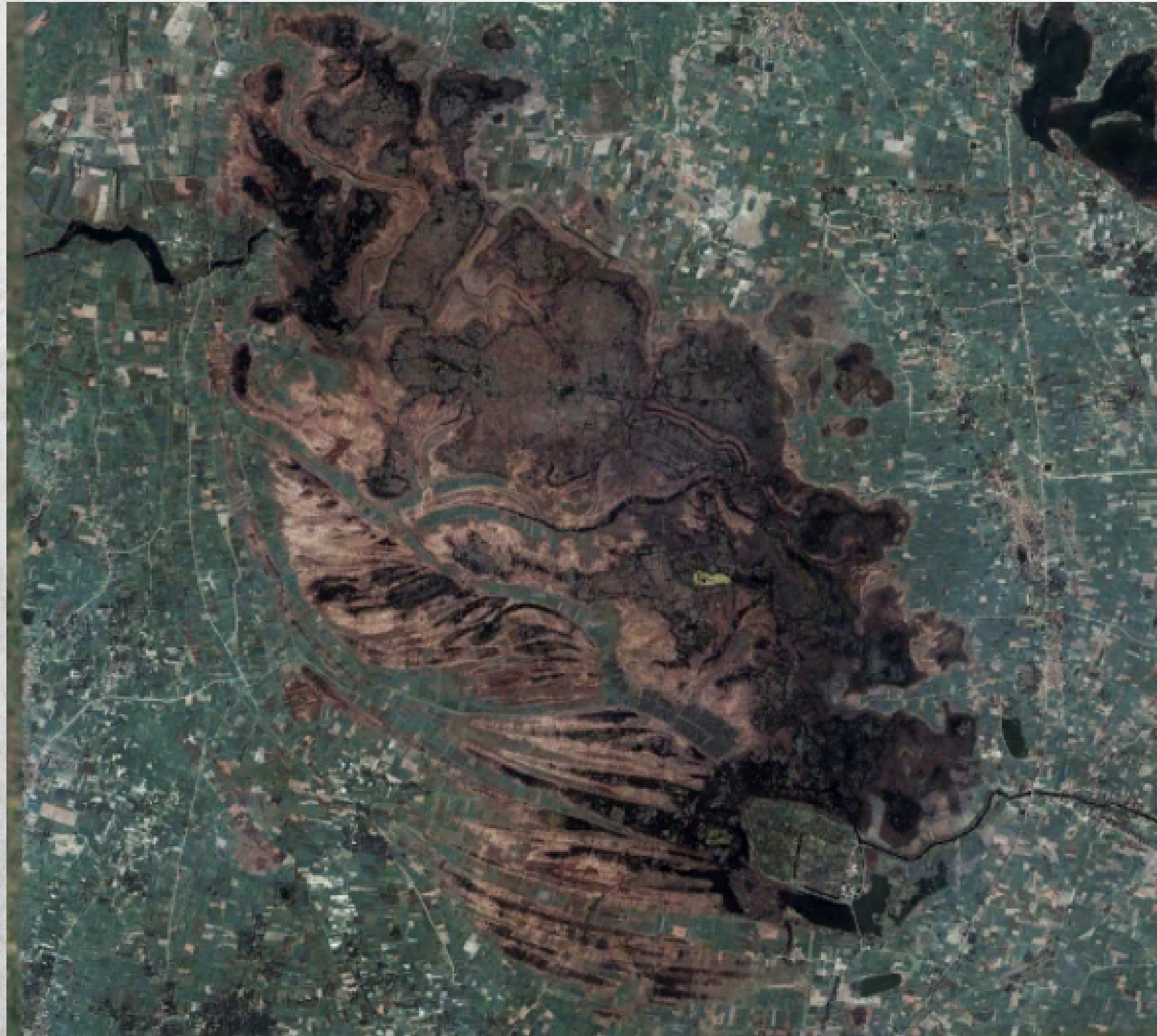
An Environmental Information Systems' Resource Partner on Water Management and Climate Change
(Under the aegis of the Ministry of Environment, Forest and Climate Change, Government of India)

BSDIC Colony, Off Boring Patliputra
Road, Near AN College, Patna, Bihar
-800013

+91-612-2575649 (O)
csec@adriindia.org
adripatna@adriindia.org

/AsianDevelopmentResearchInstitute
/ADRIENVIS
/adriindia

Kabartal, Begusarai



JANUARY

S	M	T	W	T	F	S
						1
2	3	4	5	6	7	8
9	10	11	12	13	14	15
16	17	18	19	20	21	22
23	24	25	26	27	28	29
30	31					

Wetland characteristics and features

Wetland type: Asia's largest ox-bow lake

Location & Area: Begusarai (25.61860278 and 86.13974722)

Catchment area: 2620 ha.. (Inundation extent 6700 ha.)

River basin: Indo-Gangetic flood plain and Burhi Gandak

Major fringe villages: Sakra, Kanusi, Basahi, Yakubpur, Manjhaul, meghaul, Ekamba, Parora, Narayanipipar

Village population & Area: 125,841, 7737 ha. (Census 2011)

Common species: 221 Birds (Migratory Ducks, Coots, Dabchick, Herons, Egrets, Openbill Stork, Black Ibis, Whistling Ducks, Cotton Teal, Purple Moorhen, Little Grebe, Grey Pelican, Greylag Goose, Golden Plover and Common Snipe), 50 Fish (Labeo Rohita, Cirrhinus Mrigala, C. Reba, Catla, Channa Triatus, C. Punctatus, Heteropneustes Fossilis, Colisa Faciatus, Notopterus Notopterus and Anabas Testudineus), 165 Plants, 55 Macrophytes and 394 Animals (Edible mollusc Pila globosa).

Sources: National Wetlands Atlas 2010, Kabartal Management Plan 2016

Notes

JANUARY 2022

Important Days

12th: National Youth Day

26th: Republic Day

30th: National Cleanliness day

Facts

Wetlands in India account for 4.7% of the total geographical area of the country.

The total wetland area in the Begusarai district is 20365 ha including 116 small wetlands having areas less than 2.25 ha which comprises the highest extent of wetland 10.78 percent of the geographical area of the district

Baraila, Vaishali



FEBRUARY

S	M	T	W	T	F	S
		1	2	3	4	5
6	7	8	9	10	11	12
13	14	15	16	17	18	19
20	21	22	23	24	25	26
27	28					

Wetland characteristics and features

Wetland type: Natural lake (Also known as Salim Ali Jubba Sahni Bird Sanctuary)

Location & Area: Vaishali, 1289 ha (25.76344674 and 85.55397493)

River basin/Sub basin: Burhi Gandak

Fringe villages: Amthanwa, Dulwar, Loma, Mahthi Dharamchand

Village population & Area: 18996, 1432 ha (Census 2011)

Common species: Birds (The Indian Shag, Red Collard Dove, Asian Koel, Small Bee Catcher, Brahmany Starlet, and Tree Pie), **104 Herbaceous, 15 climbers, 11 Trees** and **04 shrubs.**

Notes

Facts

Wetlands are the most biologically diverse of all ecosystems—and a wide variety of species live in wetlands.

The total wetland area in the Vaishali district is 17148 ha including 275 small wetlands having areas less than 2.25 ha which comprises about 9 percent of the geographical area of the district

FEBRUARY 2022

Important Days

02nd: World Wetlands Day

28th: National Science Day

Koliakalap, Buxar



MARCH

S	M	T	W	T	F	S
		1	2	3	4	5
6	7	8	9	10	11	12
13	14	15	16	17	18	19
20	21	22	23	24	25	26
27	28	29	30	31		

Wetland characteristics and features

Wetland type: Ox-Bow Lake

Location & Area: Buxar, 696 ha (25.612112 and 84.141266)

River basin/Sub basin: Ganga

Fringe villages: Bhojpur Kadim, Bhojpur Jadid, Rampur Mathiya, Chandpali, Koliya, Shikarpur, Basgitiya, Marwatiya

Villages population & Area: 38987, 2007 ha (Census2011)

Notes

Facts

Wetlands are natural water filters.

The total wetland area in the Buxar district is 3717 ha including 136 small wetlands having areas less than 2.25 ha which comprises about 2 percent of the geographical area of the district.

MARCH 2022

Important Days

03rd: World Wildlife Day

18th-19th: Holi/ Dhulivandan

20th: World Sparrow Day

21st: World Forestry Day

22nd: World Water Day

23rd: World Meteorological Day

Salah Chaur, Vaishali



APRIL

S	M	T	W	T	F	S
					1	2
3	4	5	6	7	8	9
10	11	12	13	14	15	16
17	18	19	20	21	22	23
24	25	26	27	28	29	30

Wetland characteristics and features

Wetland type: Natural Lake

Location & Area: Vaishali, 638 ha (25.735661 and 85.390876)

River basin/Sub basin: Burhi Gandak

Fringe villages: Tajpur Raj Urf Bahora, Hasanpur Bhadwas, Bahsi Saidpur

Villages population & Area: 504, 756 ha (Census 2011)

Common species: Fauna (Stork, Cormorant).

Notes

Facts

Wetlands can be used for wastewater treatment by municipalities.

Rivers/streams contribute almost 62 percent of the wetland extent of the Vaishali district that accounts for 10594 ha. The other dominating wetland categories of the Vaishali district are lakes/ponds (3095 ha), natural waterlogged (2926 ha) and ox-bow lakes/cut-off meanders (184 ha).

APRIL 2022

Important Days

07th: World Health Day

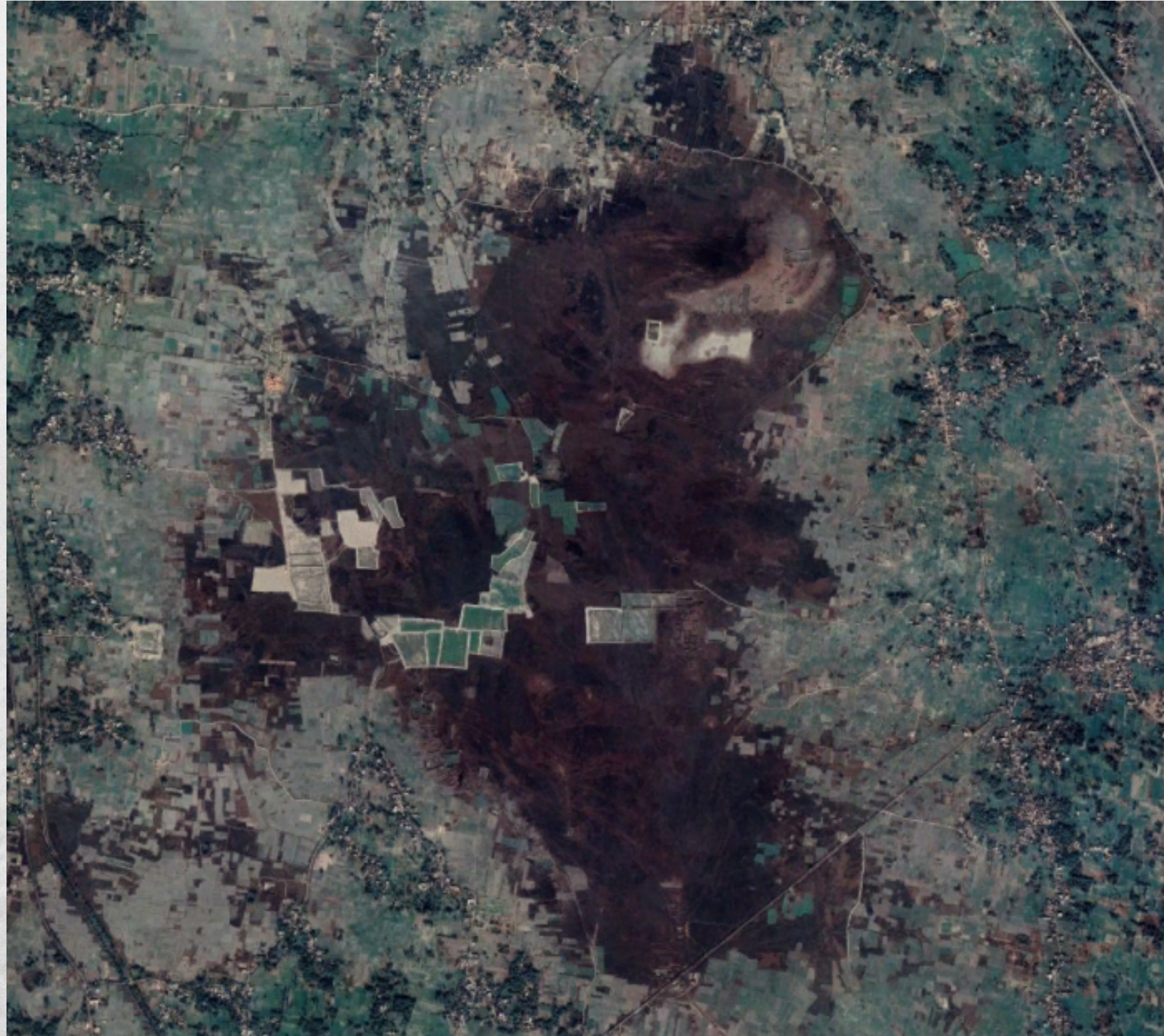
14th: Mahavir Jayanti

15th: Good Friday

18th: World Heritage Day

22nd: Earth Day

Mirzapur Bahiyara, Saran



MAY

S	M	T	W	T	F	S
1	2	3	4	5	6	7
8	9	10	11	12	13	14
15	16	17	18	19	20	21
22	23	24	25	26	27	28
29	30	31				

Wetland characteristics and features

Wetland type: Natural Waterlogged

Location & Area: Saran, 337 ha (26.08315556 and 84.70468889)

River basin/Sub basin: Gandak

Fringe villages: Dhaurigopal, Barahimpur Chakarpan, Madarpur, Sankauli,

Korranw, Barahimpur Gopi, Bahiyara, Katsa, Najiba, Bindra Patak, Rampur Khas, Rampur Digar, Sonhani, Manan Patti Mirzapur Bahiyara

Villages population & Area: 25902, 2322 ha (Census 2011)

Notes

Facts

Wetlands prevent flooding.

The total wetland area in the Saran district is 21170 ha including 430 small wetlands having area less than 2.25 ha which comprises about 8 percent of the geographical area of the district.

MAY 2022

Important Days

01st: International Labour Day

03rd: Id-ul-Fitr

09th-10th: World Migratory Bird Day

16th: Buddha Purnima

22nd: International Day for Biological Diversity

23rd: World Turtle Day

Tirla N, Katihar



JUNE

S	M	T	W	T	F	S
			1	2	3	4
5	6	7	8	9	10	11
12	13	14	15	16	17	18
19	20	21	22	23	24	25
26	27	28	29	30		

Wetland characteristics and features

Wetland type: Natural Ox Bow Lake

Location & Area: Katihar, 308 ha (25.5169 and 87.7064)

River basin/Sub basin: Ganga

Fringe villages: Dharhan, Rahar, Panki, Pakaria, Harsua, Jaunia

Villages population & Area: 11439, 1527 ha (Census 2011)

Notes

Facts

Wetlands mostly occur where water meets land.

The total wetland area in the Katihar district is 31011 ha including 602 small wetlands having areas less than 2.25 ha which comprises the highest extent of wetland about 10 percent of the geographical area of the district.

JUNE 2022

Important Days

05th: World Environment Day

08th: World Ocean Day

15th: Global Wind Day

17th: World Day to Combat Desertification
& Drought

Sariya Man Sisswa, West Champaran



JULY

S	M	T	W	T	F	S
					1	2
3	4	5	6	7	8	9
10	11	12	13	14	15	16
17	18	19	20	21	22	23
24	25	26	27	28	29	30
31						

Wetland characteristics and features

Wetland type: Natural Ox Bow Lake

Location & Area: West Champaran, 295 ha (26.789200 and 84.435990)

River basin/Sub basin: Burhi Gandak

Fringe villages: Balua Rampur, Majhariya, Tola Tumkaraia, Sisswa Sarea, Tola Malahi

Villages population & Area: 23966, 2548 ha (Census 2011)

Notes

JULY 2022

Important Days

10th: Id-ul-Zuha (Bakri Id)

11th: World Population Day

28th: World Nature Conservation Day

29th: International Tiger Day/Global Tiger Day

Facts

Wetlands can store up to fifty times more carbon compared to rain forests.

The total wetland area in the West Champaran district is 21697 ha, which includes the area contributed by 452 small wetlands (< 2.25 ha) which comprises about 5 percent of the geographical area of the district.

Lalsariya Lakes, West Champaran



AUGUST

S	M	T	W	T	F	S
	1	2	3	4	5	6
7	8	9	10	11	12	13
14	15	16	17	18	19	20
21	22	23	24	25	26	27
28	29	30	31			

Wetland characteristics and features

Wetland type: Natural Ox Bow Lake/Cut Off Meander

Location & Area: West Champaran, 283 ha (26.73271389 and 84.64967222)

River basin/Sub basin: Burhi Gandak

Fringe villages: Rajabhar, Lal Saraia, Karamwa, Majharia Shekh

Villages population: 27939, 2677 ha (Census 2011)

Notes

Facts

Half of the earth's wetlands exist within Peatlands.

River/streams comprise about 89 percent of wetlands extent of the district that accounts for 19250 ha. The other major wetlands types are ox-bow lakes/cut-off meanders (938 ha), lakes/ponds (580 ha) and natural waterlogged areas (338 ha).

AUGUST 2022

Important Days

09th: Muharram

10th: World Lion Day

10th: International Biodiesel Day

12th: World Elephant Day

15th: Independence Day

19th: Janmashtami

20th: Akshay Urja Diwas

31st: Ganesh Chaturthi

Parsa Chaur, Katihar



SEPTEMBER

S	M	T	W	T	F	S
				1	2	3
4	5	6	7	8	9	10
11	12	13	14	15	16	17
18	19	20	21	22	23	24
25	26	27	28	29	30	

Wetland characteristics and features

Wetland Type: Natural Lake

Location & Area: Katihar, 230 ha (25.5392 and 87.6606)

River Basin/Sub Basin: Ganga

Fringe villages: Mohnipipra, Tikaili, Paharpur, Jabra, Harphara, Budhaili

Villages population: 7567, 1200.52 ha (Census 2011)

Notes

SEPTEMBER 2022

Important Days

16th: World Ozone Day

18th: International Coastal Clean-up Day

27th: World Rivers Day

28th: Green Consumer Day

Facts

Wetlands are under constant threats.

Rivers/streams contribute almost 69 percent of wetlands extent of the district that accounts for 21255 ha. After rivers/streams, lakes/ponds (3146 ha), ox-bow lakes/cut-off meanders (2768 ha) and natural waterlogged (2377 ha) are the major wetlands category of the district.

Narsan Chaur, Muzaffarpur



OCTOBER

S	M	T	W	T	F	S
						1
2	3	4	5	6	7	8
9	10	11	12	13	14	15
16	17	18	19	20	21	22
23	24	25	26	27	28	29
30	31					

Wetland characteristics and features

Wetland type: Natural Lake

Location & Area: Muzaffarpur, 227 ha. (26.038343 and 85.253565)

River basin/Sub basin: Burhi Gandak

Fringe villages: Phanda urf Bishunpur Phanda, Bahilwara bhual

Village population & Area: 10989, 111.28 ha (Census 2011)

Notes

Facts

More than 19,500 animal and plant species depend on wetlands for survival globally.

The total wetland area in the Muzaffarpur district is 10490 ha including 803 small wetlands having areas less than 2.25 ha which comprises about 3 percent of the geographical area of the district.

OCTOBER 2022

Important Days

01st to 07th: Wildlife Week

02nd: Mahatma Jayanti

04th: World Animal Welfare Day

04th: World Habitat Day

05th: Dussehra

09th: Id-e-Milad

13th: International Day for Natural
Disaster Reduction

14th: Worlds Standards Day

24th: Diwali

24th: United Nations Day

24th: International Day of Climate Action

Debkhaul Chaur, Samastipur



NOVEMBER

S	M	T	W	T	F	S
		1	2	3	4	5
6	7	8	9	10	11	12
13	14	15	16	17	18	19
20	21	22	23	24	25	26
27	28	29	30			

Wetland characteristics and features

Wetland type: Natural Lake

Location & Area: Samastipur, 217ha, (25.779306 and 85.780258)

River basin/Sub basin: Burhi Gandak

Fringe villages: Lakhmipur Maheshpatti Deal, Saidpur Zahid, Raepur, Bhagwanpur Kamla, Dariapur Pataili, Rampur Keshopatti, Rupauli Buzrug.

Villages population & Area: 46083, 2411 ha (Census 2011)

Notes

Facts

Wetlands act as Survival Ground for Birds.

The total wetland area in the Samastipur district is 15022 ha including 553 small wetlands having areas less than 2.25 ha which comprises about 6 percent of the geographical area of the district.

NOVEMBER 2022

Important Days

- 6th: International Day for Preventing the Exploitation of Environment in War and Armed Conflict
- 8th: Guru Jayanti
- 11th: National Education Day
- 19th: International GIS Day
- 21st: World Fisheries Day

Karariya Mann, East Champaran



DECEMBER

S	M	T	W	T	F	S
				1	2	3
4	5	6	7	8	9	10
11	12	13	14	15	16	17
18	19	20	21	22	23	24
25	26	27	28	29	30	31

Wetland characteristics and features

Wetland type: Meander

Location & Area: East Champaran, 148 ha (26.631420 and 84.931357)

River basin/Sub basin: Burhi Gandak

Fringe villages: Pataura Tola Lala, Pataura Tola Bhataha, Bariyarpur, Baswaria

Villages population: 24043, 1489 ha (Census 2011)

Notes

Facts

Sustainable fishing can help protect wetlands.

The total wetland area in the East Champaran district is 12477 ha, which includes the area contributed by 755 small wetlands (< 2.25 ha) which comprises about 3 percent of the geographical area of the district.

DECEMBER 2022

Important Days

- 2nd: National Pollution Control Day
- 3rd: Bhopal Gas Tragedy Day
- 5th: World Soil Day
- 10th: Human Rights Day
- 11th: International Mountain Day
- 14th: National Energy Conservation Day
- 25th: Christmas Day